



# Cultural Resources Capabilities

## KEY STAFF

**Ryan A. Rowles, M.A., RPA**  
Cultural Resources  
Department Manager  
22 years experience

**Frank Vento, Ph.D.**  
PG-001831-G  
Geoarchaeologist /  
Geomorphologist  
39 years experience

**Laura C. Ricketts, M.A.**  
Senior Architectural Historian  
26 years experience

**Jessica L.S. Schumer,  
M.A., RPA**  
Senior Archaeologist  
19 years experience

**Karen Reed**  
WV Project Manager  
15 years experience



Ligonier, PA - Headquarters  
724.238.4138  
Charleston, WV  
304.719.4778  
Steubenville, OH  
740.219.1242  
[www.markosky.com](http://www.markosky.com)

At Markosky, our archaeologists and architectural historians take pride in walking you through the Section 106 process. Our foresight and thoughtful solutions effectively and painlessly accomplish your projects. Our Cultural Resource services include geomorphological surveys, phased archaeological investigations, above ground historic structures evaluations, findings of eligibility and effect and any other associated Section 106 work.

## ARCHAEOLOGY KEY SERVICES

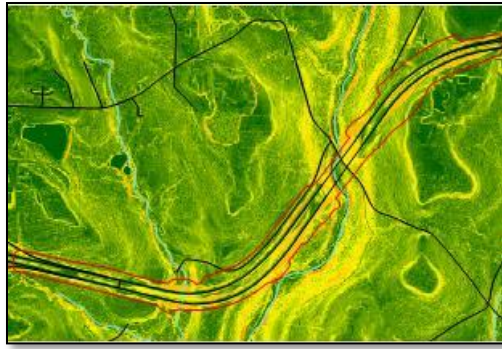
- Phase I, II, and III Archaeological Investigations
- Resource Identification and Planning
- Determinations of Eligibility and Effect
- Archaeological Monitoring
- Geomorphological Investigations
- Geophysical Investigations (GPR, Resistivity, Magnetometer)
- Historic Grave Identification
- Curation Standards and Methods
- Consulting Party Coordination
- Avoidance Alternatives
- Agreement Documents
- Alternative Mitigation
- Historic Research
- Section 106 Training/ Seminars

## HISTORIC STRUCTURES KEY SERVICES

- Resource Identification
- Historic Structures Reconnaissance Surveys
- Constraints Mapping
- Historic Contexts and Background Research
- Eligibility Studies for Individual Resources and Historic Districts
- Historic Bridge Rehabilitation (Feasibility) Analyses
- Determination of Effects
- Resolution of Adverse Effects
- Creative Mitigation Measures
- Agreement Documents
- Consulting Party Coordination
- Public Outreach
- National Register Nominations
- Historic Structures Inventories
- Section 4(f) Documentation for Historic Properties

## COLLABORATIVE ENGINEERING

**Archaeology**  
**SR 0080, Section 365**  
*I-80 Canoe Creek*  
*Bridges*  
 PennDOT District 10-0  
 Clarion County



Markosky completed a cultural resources constraints study and mapping, for both archaeology and historic structures. Through background research, GIS analyses, and field reconnaissance, Markosky identified potential cultural resources to assist project design.

**Archaeology**  
**SR 0281, Section 023**  
*Gilmore to Welsh*  
*Hill Road*  
 PennDOT District 9-0  
 Somerset County



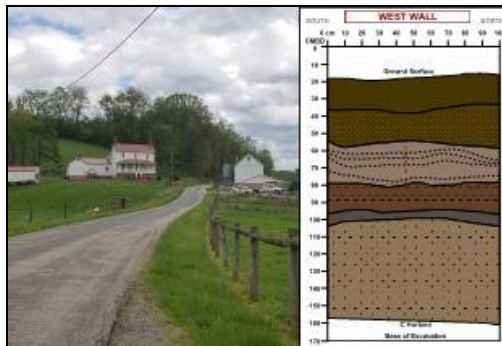
Markosky conducted a geophysical survey using ground penetrating radar and electrical resistivity that identified anomalies in a planned road cut adjacent to a historic cemetery. Phase I archaeology then verified these as unmarked grave shafts and also identified a historic site. Markosky assisted the District with project planning and coordination to create a Plan of Action for Phase II. Markosky wrote a Summary Report to expedite SHPO concurrence and move forward grave shaft excavations before construction. A qualified archaeologist then monitored during construction to verify that no human remains were disturbed.

**Historic Structures**  
**SR 4009, Section B01**  
*Watts Mill Bridge*  
 PennDOT District 11-0  
 Beaver County



Markosky developed the project Purpose and Need for this historic Pratt pony truss bridge at PennDOT's direction. We identified and coordinated with consulting parties to determine whether the structure could be preserved as a pedestrian bridge, and then assessed the potential effects of various project options including preservation in place, the marketing of the historic bridge, or its removal.

**Cross-Discipline**  
**Collaboration**  
**SR 3041, Section A10**  
*SR 3041 over Short Creek*  
 PennDOT District 12-0  
 Washington County



PennDOT directed Markosky to evaluate not only the National Register eligibility of the adjacent mid-19th century farm, but also the potential for the surrounding properties to constitute an eligible Rural Historic District. In addition, Markosky conducted geomorphological and archaeological investigations along Short Creek. The geomorphological study determined the ages of soils and landforms, while also helping to refine the methods of Phase IB archaeological investigations at a prehistoric archaeological site to



#### Our TEAM Approach

- T**ECHNOLOGY Advanced Analytics and Modeling
- E**XPERTISE Experienced and Certified Professionals
- A**GILITY Flexible & Responsive
- M**ANAGEMENT Collaborative Project Management